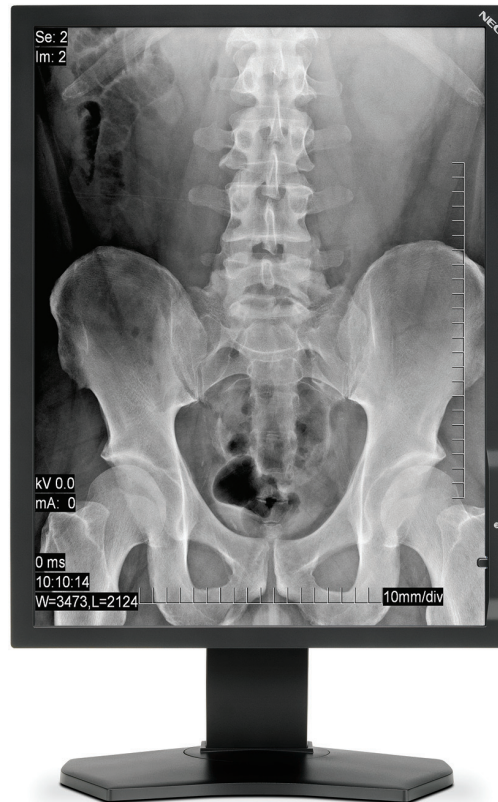


NEC MD211G3



NEC MD Series Digital Grayscale Display Systems

Display Systems for Primary Diagnostics of Medical Images

The NEC MD211G3 (L211UV) is designed for viewing of grayscale digital images for diagnosis by trained physicians. Applications include diagnostics image reporting in radiography as well as CT, MRI and other medical imaging modalities. To guarantee the display performance as specified, a MD211G3 display must only be used in conjunction with NEC approved display controller boards and drivers.

Key Features:

- 21.3" 3MP (2048x1538 resolution) with best-in-class SA-SFT technology for most stable viewing performance
- Unique re-calibratable Front Sensor System for latest QA conformance capability
- Individual factory calibrated DICOM curve with unique in-built "Quick Screen QA" check
- Precise DICOM GSDF calibration using internal 15.5-bit look-up table
- DisplayPort connectivity

HEALTHCARE

NEC Display Solutions

NEC MD211G3

TECHNICAL SPECIFICATIONS

Panel technology	SA-SFT TFT
Screen diagonal [inch/cm]	21.3 / 54
Active screen area [cm]	43.3 x 32.5
Native resolution [Megapixel]	3.1
Landscape / Portrait mode [Pixel]	2048 x 1536 / 1536 x 2048 at 60 Hz (Reduced Blanking)
Pixel pitch [mm]	0.2115 x 0.2115
Contrast ratio (typ.)	900:1
Viewing angle (H / V @ CR > 10:1)	176°/ 176°
Luminance (maximum Native)	1450 cd/m²
Luminance (calibrated)	400 cd/m², recommended
Response time (typ.) [ms]	27 (tr + tf)
Grayscale reproduction [8-bit Dual Link]	256 levels from possible 48961 grey tones
Grayscale reproduction [10-bit Single Link PP]	1024 levels from possible 48961 grey tones
Programmable gamma correction	15.5-bit (48961 grey tones)
Factory calibration	Gamma correction according to DICOM GSDF at 400 cd/m²
Signal inputs	Digital: 1x DVI-D (8-bit Dual Link or 10-bit Packed Pixel "Single Link"); 1x DisplayPort
Horizontal frequency [kHz]	31.5-99.4 and 126.3
Vertical frequency [Hz]	30, 50 - 85
Power consumption (max.) [W]	105
Power saving mode [W]	<2.0
Dimensions (W x H x D) [mm]	361.6 x 483.4 - 580.7 x 227.6 (Portrait), 467.8 x 377.6 - 527.6 x 227.6 (Landscape)
Weight (including stand) [kg]	10.7
Stand features	97 mm height adjust range Portrait, 150 mm Landscape, Tilt, Swivel, Screen rotation
Safety and ergonomics	Pending: CE-MDD (EN60601-1, EN60601-1-2); TÜV Approved Medical Device (TÜV GM); DIN V6868-57 Category A; FDA501k (pending), CCC
Ambient temperature (operating) [°C]	+5 to +35
Ambient humidity (operating) [%]	30 to 80 (non-condensing)
VESA mounting interface [mm]	100 x 100 (4 points)
Kensington Security Slot (Theft security)	yes
Other advanced features	Individual factory calibrated DICOM gamma correction curve; Precise DICOM GSDF calibration using internal 15.5-bit look-up table; Control buttons on cabinet back side, with virtual keypad on screen; Multiple OSD lock-out modes to prevent tampering with calibrated screen, Quick Screen QA
Approved Display Controllers	Choice of Matrox, AMD/ATI and nVIDIA models for best imaging performance and compatibility with GammaCompMD QA software
Warranty	3 years warranty incl. backlight
Shipping contents	Display; Continental and UK power cord; Signal Cable DVI-D to DVI-D; Multiple language quick reference guide; CD-ROM with User Guides, GammaCompMD Client QA Software, DisplayPort signal cable, USB cable
Options	Calibration instrument (MDSVSENSOR PRO)

NEC MD SERIES GRAYSCALE DISPLAY SYSTEM CONFIGURATIONS *

Display Model variety	3 Megapixel Single or Dual Display Clear Base
Display controller board variety	8 Bit or 10 Bit PCI Express Bus
Software	GammaCompMD QA Software

CE-MDD declaration for model MD211G3 is in accordance with the European Directive 93/42/EEC (Medical Device Directive). NEC MD Series Display Systems are registered as medical devices at DIMDI and succeeded pre-qualification for the German X-ray ordinance acceptance tests according to DIN V6868-57.

Medical device registration plays an important role in complying with mandatory EU regulations on the medical vigilance system. In addition, product registration ensures you receive the best after-sales support and warranty conditions.

Please register your NEC medical device at
<http://medical.nec-display-solutions.com/medregistration>

For further information please contact us at: med-info@nec-displays.com
www.medical.nec-display-solutions.com

The data in this publication is for illustration purposes only and does not necessarily represent standards or specifications which must be met by NEC Display Solutions. All hardware and software names are brand names and/or registered trademarks of the respective owners. All rights reserved, in particular for the case of granting of patent or petty patent. Availability and technical specifications are subject to change without notice. Issue: 23. May 2012